

ALL WORK ON SITE TO COMPLY WITH CURRENT NEW ZEALAND HEALTH & SAFETY IN EMPLOYMENT ACT AND REGULATIONS. REFER APPROVED NZ COP LOAD-LIFTING RIGGING NOTIFIABLE WORK IS THE RESPONSIBILITY OF THE HIRER

ALL RIGGING CONTRACTORS TO BE PREAPPROVED BY NSEC OR NOMINEE USE OF BURLAP WITH SWR OR CHAIN SLINGS IS MANDATORY, AND RECOMMENDED WITH SOFT SLINGS

ALL RIGGING TO BE ATTACHED AT NODE POINTS OF ROOF TRUSSES ANY VARIATION TO BE APPROVED BY A QUALIFIED PERSON PRIOR TO ANY RIGGING WORK COMMENCING ON SITE.

ALL RIG POINTS (ON ROOF BEAMS / TRUSSES OR BRIDGING BEAMS / TRUSSES) TO BE CENTRED AS CLOSE TO PLUMB ABOVE PICK UP POINTS (ON RIG) / WITHIN ±5° VERTICAL

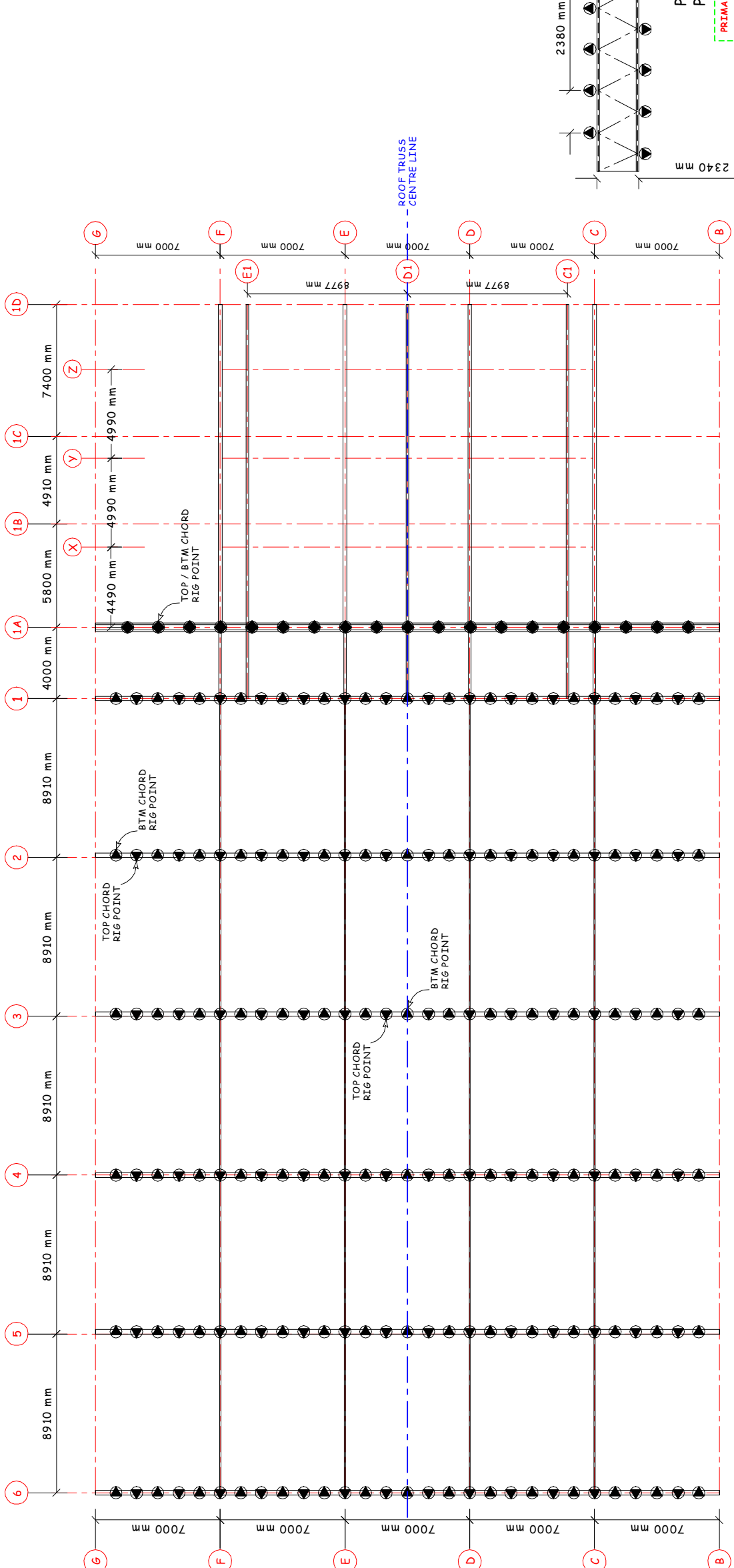
RIG POINTS POSITIONED BETWEEN / REMOTE FROM ROOF BEAMS / TRUSSES REQUIRE BRIDGING TRUSSES TO TRANSFER LOADS.

BRIDLING OF RIG POINTS BETWEEN ROOF BEAMS AND/OR ROOF TRUSSES IS NOT PERMITTED

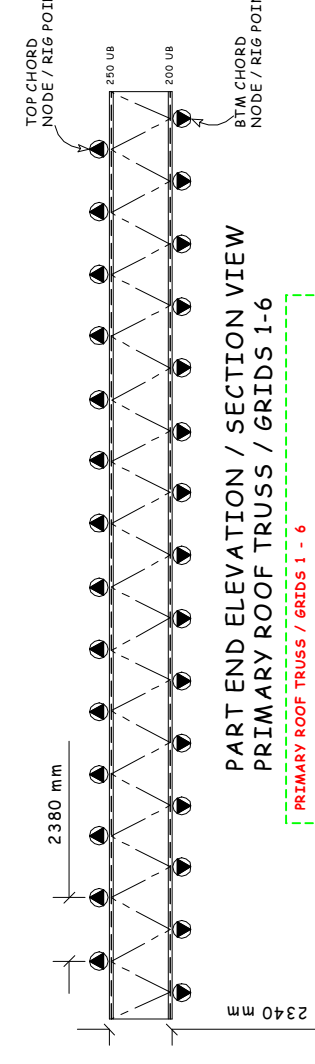
BRIDGING BEAMS/TRUSSES ARE TO BE OF APPROVED DESIGN AND ADEQUATE LOAD RATING, AND ARE THE RESPONSIBILITY OF THE HIRER

SAFE WORKING LOADS - SWL's
 TEMPORARY LOADS - LIFTING / PA / EFFECTS - TO BE DETERMINED AND CHECKED WITH NSEC SWL DATA BY A COMPETENT PERSON PRIOR TO ANY RIGGING ON SITE
 LOADINGS THAT EXCEED NSEC SWL DATA TO BE APPROVED BY A QUALIFIED PERSON PRIOR TO ANY RIGGING ON SITE

IF IN DOUBT - ASK

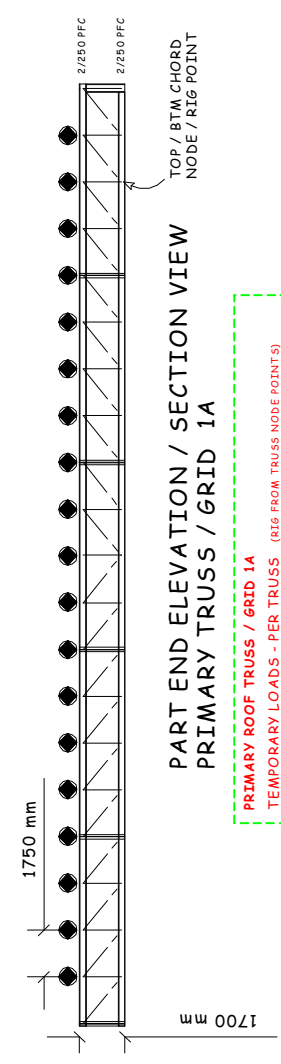


PLAN / TOP VIEW



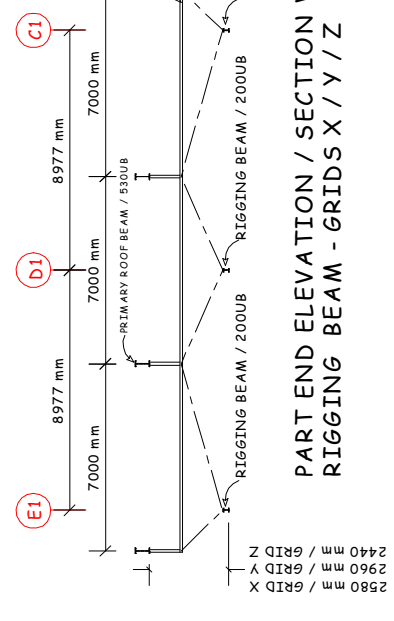
PART END ELEVATION / SECTION VIEW
PRIMARY ROOF TRUSS / GRIDS 1-6

PRIMARY ROOF TRUSS / GRIDS 1 - 6
 TEMPORARY LOADS - PER TRUSS (RIG FROM TRUSS NODE POINTS)
 MAXIMUM POINT LOAD 1000 kg / MINIMUM SPACING 4760 mm
 TOTAL LOAD PER BEAM NOT TO EXCEED 7000 kg (7 tonne)

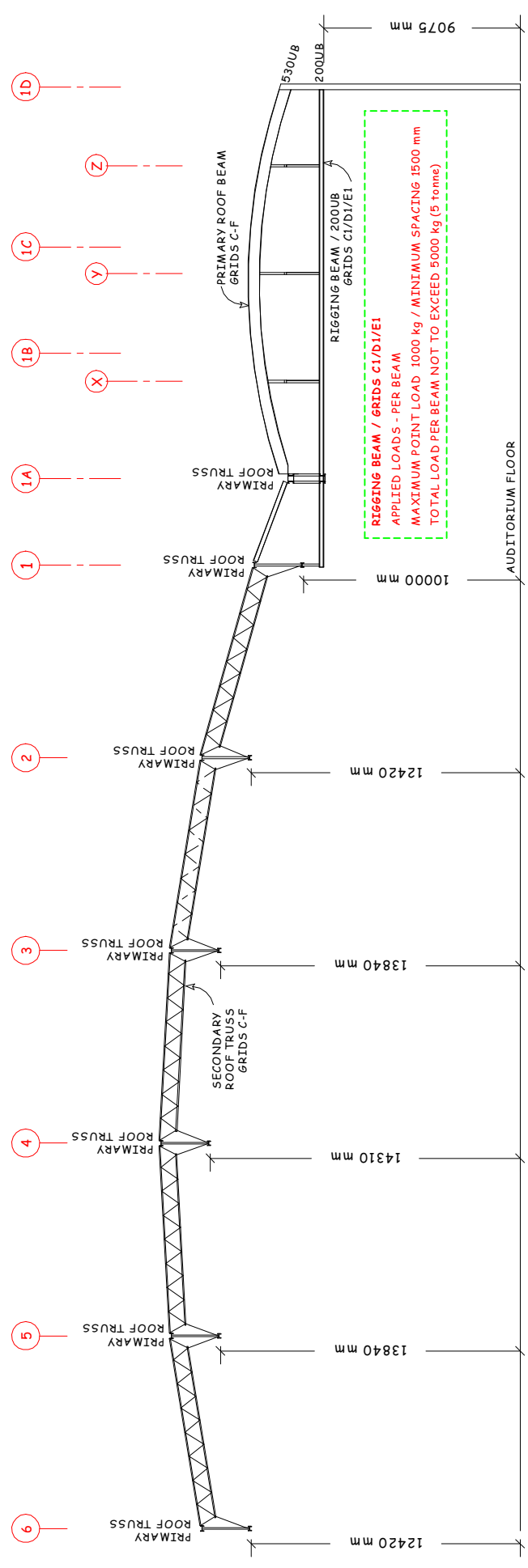


PART END ELEVATION / SECTION VIEW
PRIMARY TRUSS / GRID 1A

PRIMARY ROOF TRUSS / GRID 1A
 TEMPORARY LOADS - PER TRUSS (RIG FROM TRUSS NODE POINTS)
 MAXIMUM POINT LOAD 1000 kg / MINIMUM SPACING 3500 mm
 TOTAL LOAD PER BEAM NOT TO EXCEED 7000 kg (7 tonne)



PART END ELEVATION / SECTION VIEW
RIGGING BEAM - GRIDS X / Y / Z



SIDE ELEVATION / SECTION VIEW

Project: **NSEC SWL DATA Temporary Loads Rigged from Existing Roof Structure**

Ref1: 5N11 Date: Jan 2005 Scale: 1:200

Ref2: **R1** Original Sheet: **A2**

North Shore Events Centre
Auckland New Zealand
Phone (64)(9) 4438199

Project: **ShowQuip Ltd**
C (64) (27) 4900699
E nick@showquip.com
Auckland NZ
www.showquip.com

